

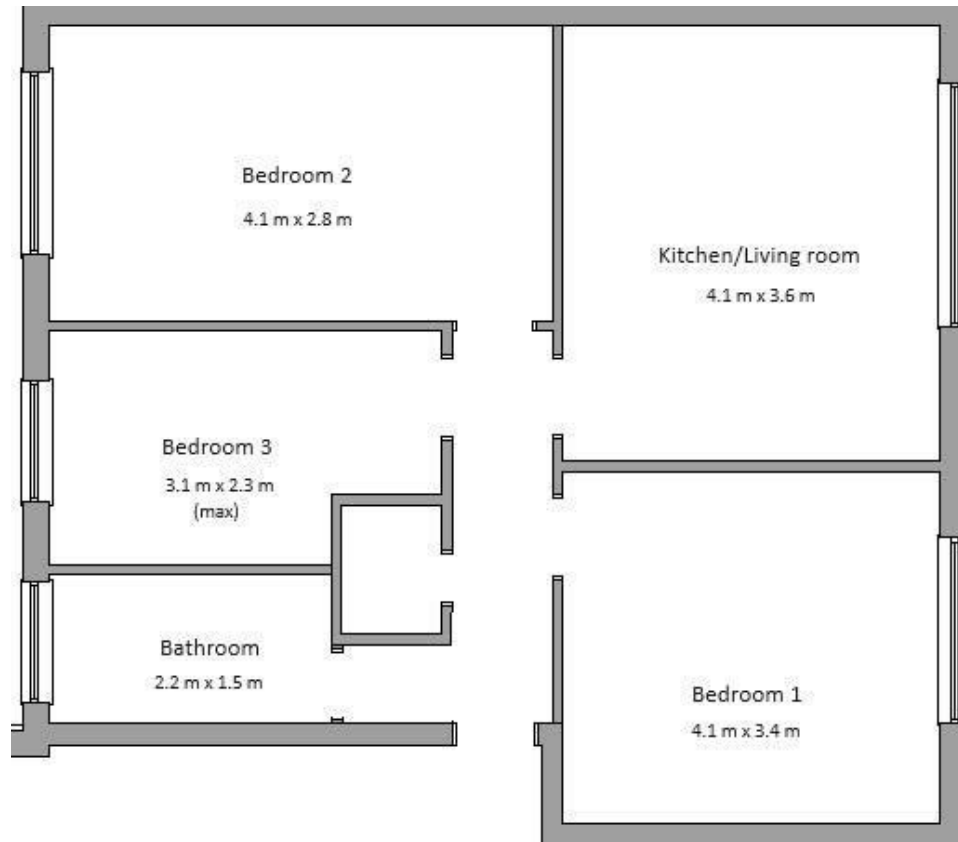
Beverley Way

, London SW20 0AE

- OPEN-PLAN KITCHEN/LIVING ROOM
- 2 DOUBLE BEDROOMS
- FITTED WARDROBES
 - EPC RATING C
 - PARKING
- FULLY TILED BATHROOM
- 1 SMALL DOUBLE OR SINGLE BEDROOM
 - GAS CENTRAL HEATING
 - FURNISHED OR UNFURNISHED
 - STORAGE IN HALLWAY

£1,900 PCM

Local Authority Kingston
upon Thames Royal
Borough
Council Tax Band C



We Are Lettings Ltd RESI Office

G7 Thames House, 63-67 Kingston
Road, New Malden, Surrey, KT3 3PB

Contact

020 8037 5953
admin@wearelettings.co.uk

Agents Note: Whilst every care has been taken to prepare these particulars, they are for guidance purposes only. All measurements are approximate and for general guidance purposes only and whilst every care has been taken to ensure accuracy, they should not be relied upon and potential buyers/tenants are advised to recheck the measurements.

