

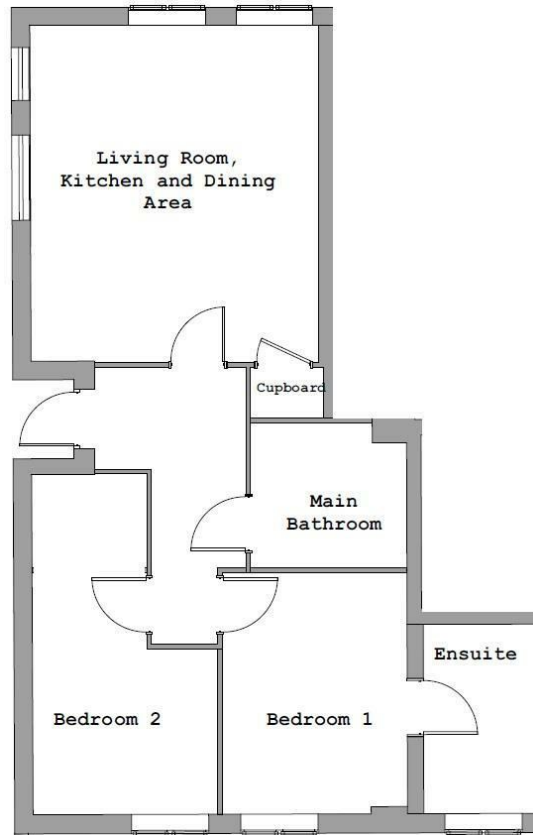


Montem Road , New Malden KT3 3QW

- LARGE LIVING SPACE
- ALLOCATED PARKING
- EN SUITE BATHROOM
- GAS CENTRAL HEATING
- KITCHEN WITH INTERGRATED APPLIANCES
 - 2 DOUBLE BEDROOMS
- BATHROOM WITH SHOWER OVER BATH
 - FURNISHED OR UNFURNISHED

£1,850 PCM

Local Authority Kingston
upon Thames Royal
Borough
Council Tax Band C



We Are Lettings Ltd RESI Office

G7 Thames House, 63-67 Kingston
Road, New Malden, Surrey, KT3 3PB

Contact

020 8037 5953
admin@wearelettings.co.uk

Agents Note: Whilst every care has been taken to prepare these particulars, they are for guidance purposes only. All measurements are approximate and for general guidance purposes only and whilst every care has been taken to ensure accuracy, they should not be relied upon and potential buyers/tenants are advised to recheck the measurements.

