



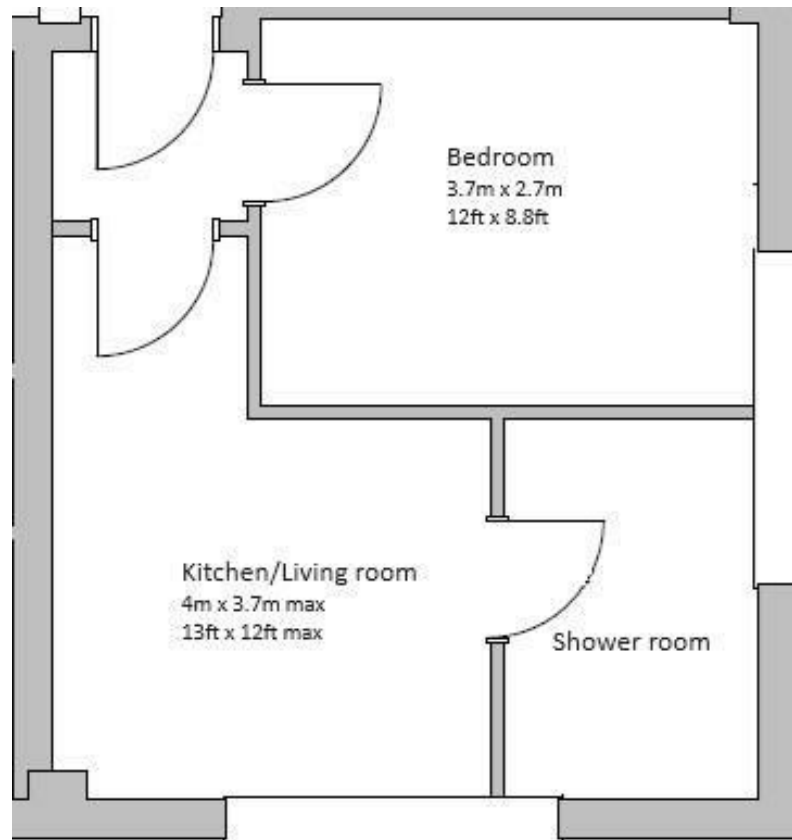
## Kingston Road , New Malden KT3 3PB

- LARGE DOUBLE BEDROOM
  - EPC RATING C
- OPEN PLAN KITCHEN/LIVING ROOM
- OPEN PLAN KITCHEN & LIVING ROOM
- GAS CENTRAL HEATING
- SHOWER ROOM

£1,350 PCM



Local Authority Kingston  
Council Tax Band B  
EPC Rating C



**We Are Lettings Ltd RESI Office**

G7 Thames House, 63-67 Kingston  
Road, New Malden, Surrey, KT3 3PB

**Contact**

020 8037 5953  
admin@wearelettings.co.uk

Agents Note: Whilst every care has been taken to prepare these particulars, they are for guidance purposes only. All measurements are approximate and for general guidance purposes only and whilst every care has been taken to ensure accuracy, they should not be relied upon and potential buyers/tenants are advised to recheck the measurements.