



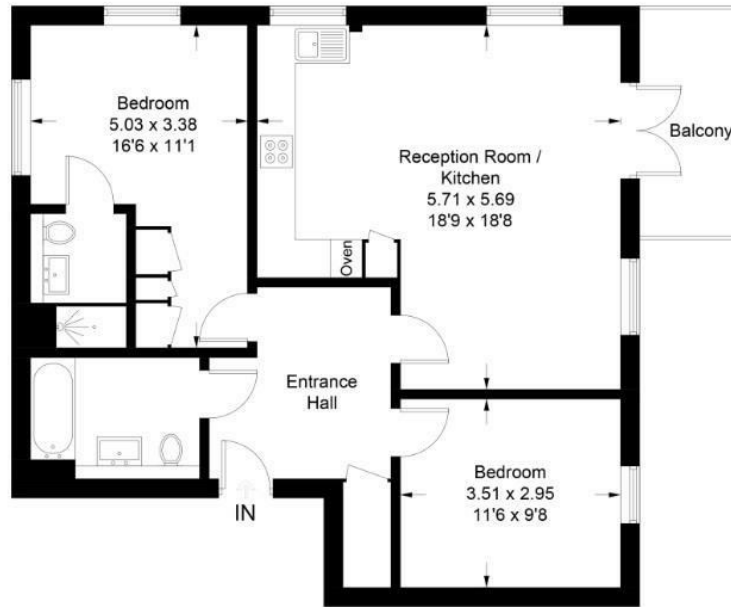
## Linden Grove , New Malden KT3 3BW

- NEWLY BUILT
- FULLY INTEGRATED KITCHEN
- FAMILY BATHROOM
- STORAGE SPACE
- BALCONY
- LIFT
- ALLOCATED PARKING
- PRINCIPLE BEDROOM WITH EN-SUITE
- EPC RATING B

£2,000 PCM

Local Authority Kingston  
Council  
Council Tax Band C  
EPC Rating B

Approximate Gross Internal Area = 73.4 sq m / 790 sq ft



**We Are Lettings Ltd RESI Office**

G7 Thames House, 63-67 Kingston  
Road, New Malden, Surrey, KT3 3PB

**Contact**

020 8037 5953  
admin@wearelettings.co.uk

Agents Note: Whilst every care has been taken to prepare these particulars, they are for guidance purposes only. All measurements are approximate and for general guidance purposes only and whilst every care has been taken to ensure accuracy, they should not be relied upon and potential buyers/tenants are advised to recheck the measurements.

